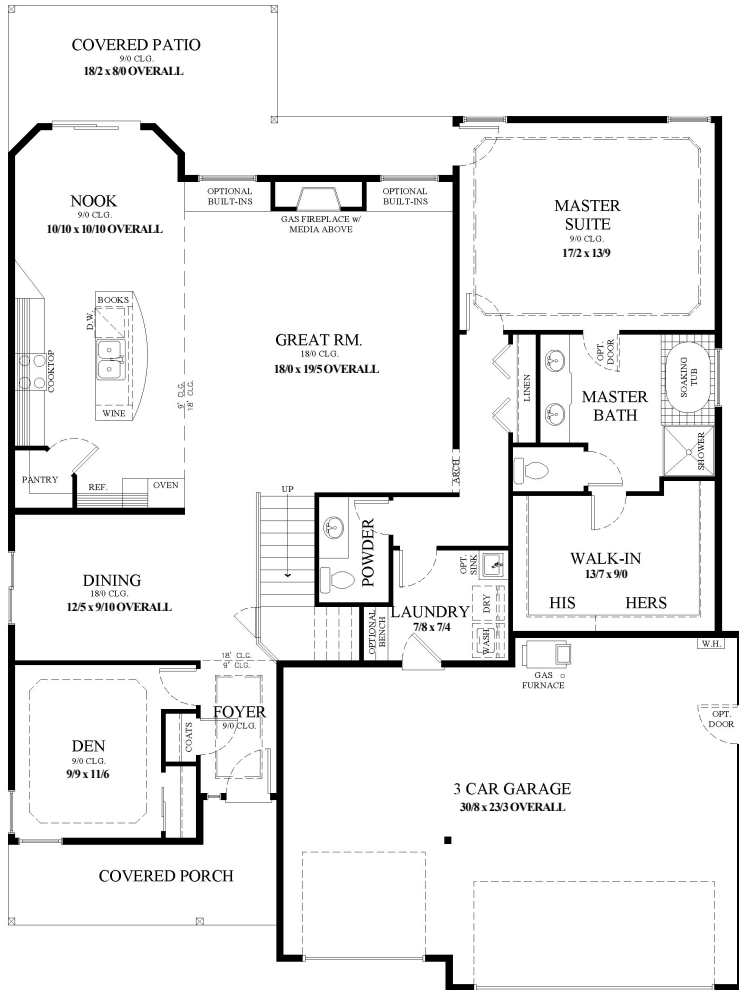
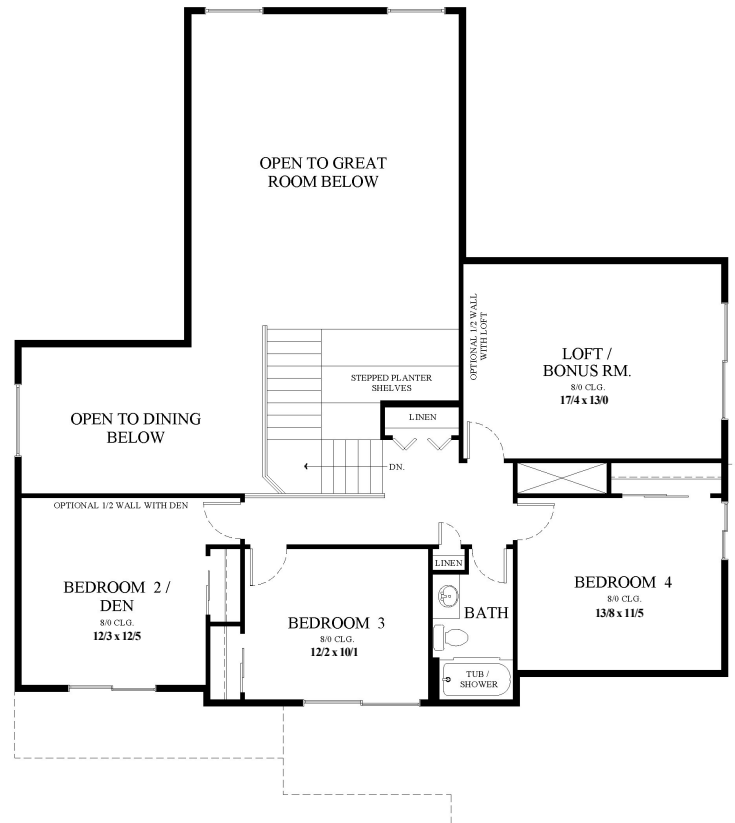


TavernerRidge

CLASSIC COLLECTION

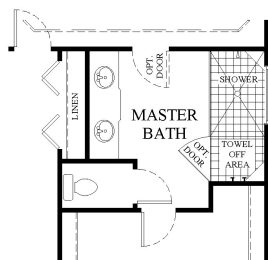


MAIN LEVEL



UPPER LEVEL

OPTIONAL
SUMMERPLACE
SHOWER



BRIGHTON II

Base Square Footage = 2901

**SUMMERPLACE
HOMES, INC.**

Building a Climate of Excellence

WA. LIC.# SUMMEH1050N5

All square footages and room sizes are approximate. Plans, prices and specifications are subject to change without notice. This plan is copyrighted and may not be reproduced without permission. Actual patio position may vary based on site conditions.

Taverner Ridge

CLASSIC COLLECTION

Hot off the drawing board this exciting design offers fresh improvements to one of our most popular master on the main layouts. On the main level you will find all of the features that you'd expect, including a spacious island kitchen, two dining areas along with the addition of a huge two story great room.



CRAFTSMAN

A large private master suite and an optional full guest bath compliment the plan's functionality. An oversized three car garage complete the lower level.



NORTHWEST TRADITIONAL

Above you'll find three additional bedrooms and a huge bonus room with multiple lofting options for that wide open feel.



RENAISSANCE REVIVAL

BRIGHTON II

NORTHWEST



PARTNER


**SUMMERPLACE
HOMES, INC.**
Building a Climate of Excellence

In the spirit of continuous improvement, we reserve the right to make changes to plans, specifications and pricing without notice. Variations in interior and exterior configurations may occur because of normal design criteria and changing building codes. All square footages and room dimensions are approximate only. All illustrations, floor plans and maps are artist's conceptions only and are not intended to be exact depictions of actual site conditions.